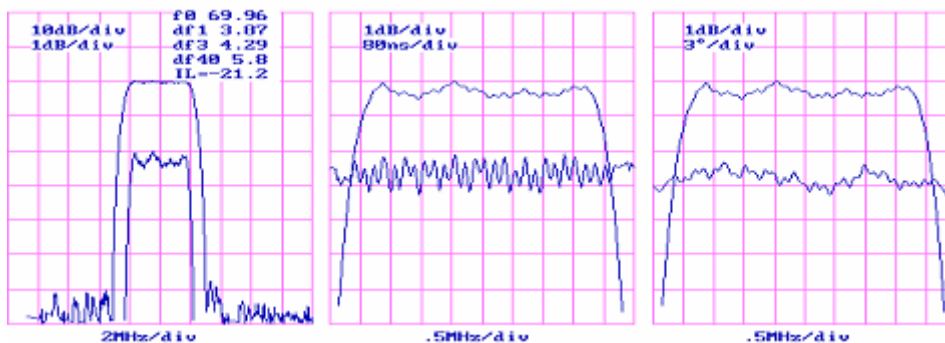




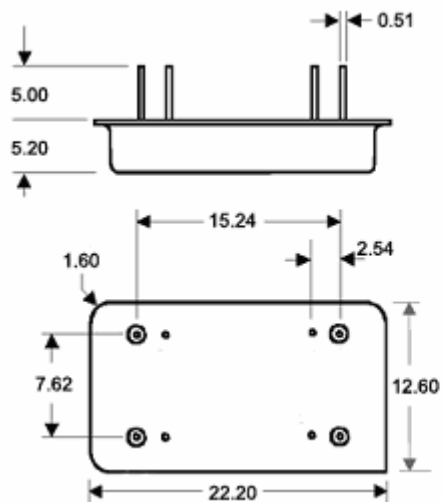
## LBT7031 SAW Filter Electrical Characteristic

<i>Specifications</i>				
Parameter	Unit	Minimum	Typical	Maximum
<b>Center Frequency</b>	MHz	69.91	70	70.09
<b>Insertion Loss</b>	dB		21.5	25
<b>1 dB Bandwidth</b>	MHz	3.7	3.8	
<b>3 dB Bandwidth</b>	MHz	4	4.2	
<b>40 dB Bandwidth</b>	MHz		5.8	6.1
<b>Passband Variation</b>	dB		0.4	0.8
<b>Phase Linearity</b>	degrees		3	6
<b>Group Delay Variation</b>	nsec		80	100
<b>Absolute Delay</b>	usec		3	
<b>Ultimate Rejection</b>	dB	50	60	
<b>Substrate Material</b>		112-LiTaO <sub>3</sub>		
<b>Ambient Temperature</b>	° C	25		
<b>Package Size</b>		DIP2212 (22.2x12.6x5.2mm <sup>3</sup> )		

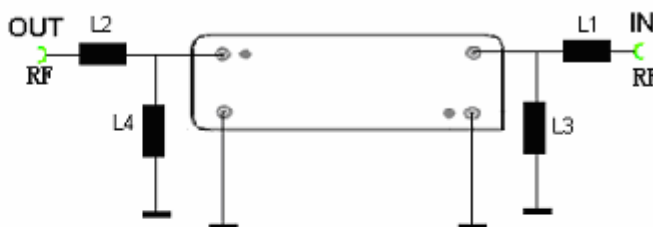
### *Typical Performance*



### *Package Outline*



### *Matching Configuration*



L1=L2=168nH

L3=L4=270nH

Source/Load Impedance=50 ohm

Notes - Component values may change depending on board layout.